

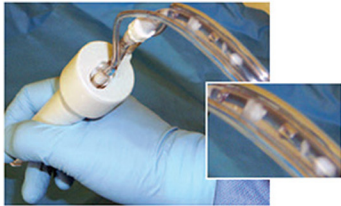
NUCLEOTOME®

Automated Discectomy

**Small Devices,
Big Results...**

BRIDGING THE GAP

Helping clinicians bridge the gap between conservative therapy and more invasive surgery. Nucleotome allows physicians to treat patients with painful contained disc herniations. Now visualize and quantify results with a truly minimally invasive procedure. While keeping patients safe!

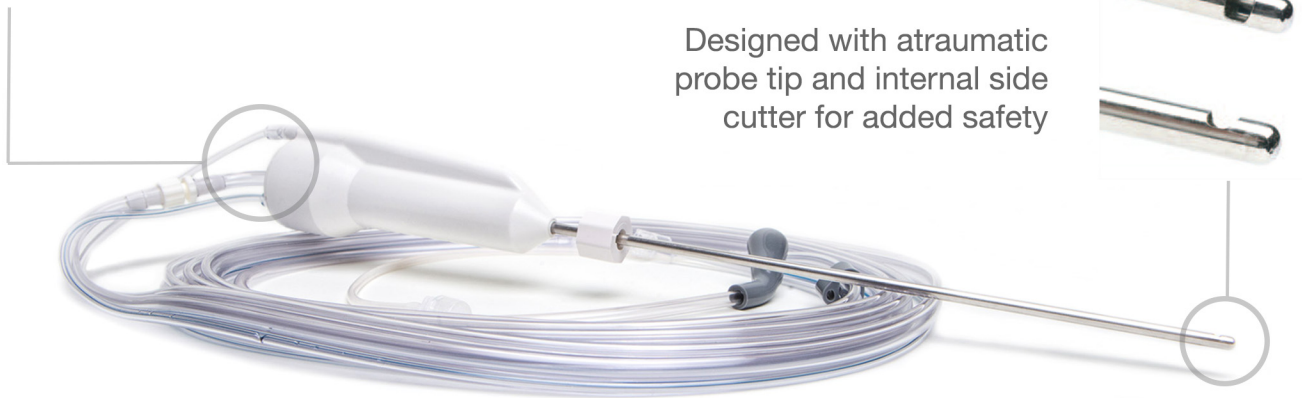


QUANTIFY

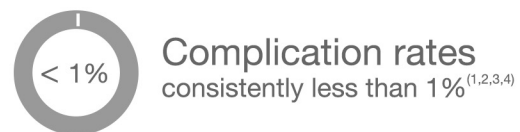
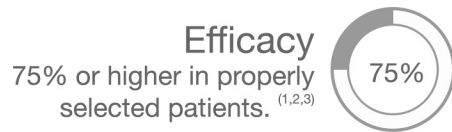
Visualize nucleus being removed and collected during the procedure

SAFE

Designed with atraumatic probe tip and internal side cutter for added safety



PROVEN RESULTS



Nucleotome is indicated for patients with back and radicular leg pain due to contained herniated discs.

Nucleotome allows patients to resume a normal lifestyle quickly.

CLINICAL REFERENCES

1. Onik, G., Mooney, V., Maroon J., et al: Automated Percutaneous Discectomy: A Prospective Multi-Institutional Study, Neurosurgery 1990: Vol. 26, No. 2: 228-233
2. Davis G., Onik G., Helms C., Automated Percutaneous Discectomy, Spine 1991: Vol. 16, No. 13: 359-363
3. Gill K., Blumenthal S., Clinical Experience with Automated Percutaneous Discectomy: The Nucleotome System, Orthopedics 1991: 14: 757-760
4. Bonaldi, G., Automated Percutaneous Lumbar Discectomy: technique, indications and clinical follow-up in over 1000 patients, Neuroradiology, 2003, 45: 735-743

NUCLEOTOME KIT

Nucleotome percutaneous kits allow physicians to safely extract enough nucleus to sufficiently decompress the disc through a small puncture without removing bone or disturbing the epidural space. It's most often an outpatient procedure done under local anesthesia.

Nucleotome resects and aspirates nucleus in one step, limiting multiple passes into the disc. The probe does not cut annulus or endplates. Various probe sizes available.

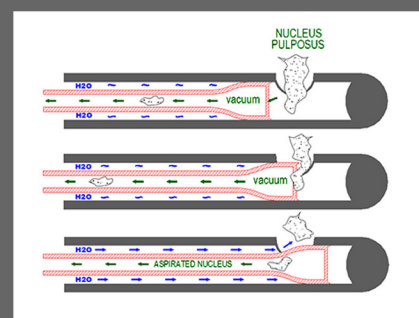
DISC ACCESS COMPONENTS



Single-use components packaged in a sterile tray for convenience. Includes Aspiration Canister with tissue filter.

NUCLEOTOME PROBE OPERATION

- Vacuum draws nucleus into probe side window
- Cutter within probe shaves unwanted nucleus
- Nucleus flushed through probe with irrigation and collected in a tissue filter



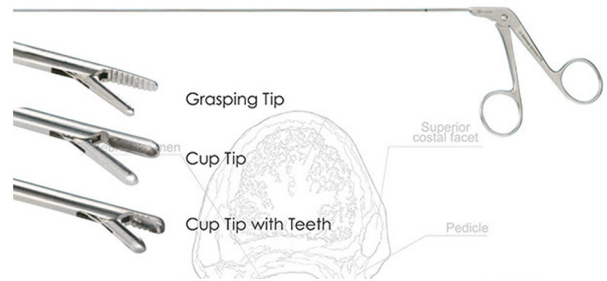
THE STANDARD FOR SAFETY & EFFICACY

Nucleotome uses an automated shaver and continuous irrigation to remove disc nucleus giving physicians the capability to reach the desired end point. The Nucleotome has an atraumatic probe tip and produces no heat, which translates to safety and patient comfort. Nuclear material is aspirated and collected for post-op examination.



NUCLEOTOME CONSOLE

The Nucleotome Console features an adjustable cut rate and elapsed time display.



CLARUS FORCEPS

For manual removal of nucleus. Aids in loosening tougher material while limiting the number of insertions.

ORDERING INFORMATION

MODEL DESCRIPTION

11000	Nucleotome® Console
21200	Nucleotome®, Probe Set, Short, 2.0 mm *
22500	Nucleotome®, Probe Set, 2.0 mm *
23500	Nucleotome®, Probe Set, 2.5mm *
23535	Nucleotome®, Probe Set, 3.5 mm *

* (Two Per Package)

ACCESSORIES

3220-002	2.0 mm Forceps, Cup, (28.5 cm)
3240-002	2.0 mm Forceps, Grasping (28.5 cm)
35700	2.0 mm Cup Forceps with Teeth (19.5 cm)
35701	2.0 mm Cup Forceps with Teeth (28.5 cm)

CLARUS MEDICAL, LLC
 13355 10th Ave North, Suite 110
 Minneapolis, MN 55441
 (763) 525-8403
 www.clarus-medical.com

 **CLARUS**[®]
 M E D I C A L
 Products for Less Invasive Medicine